



**Alachua County
Environmental Protection Department**

ACCESS Spring 2016 Presentation

Chris Bird, Director



Alachua County Environmental Protection Department

Environmental Stewardship

- Clean Water
- Protection and Purchase of Sensitive Lands
- Responsible Hazardous Waste Management
- Healthy, Natural Environment





Alachua County Environmental Protection Department





Alachua County Environmental Protection Department

Programs Overview

- **Pollution Prevention**
 - Petroleum Management
 - Hazardous Wastes Collection
 - Contaminated Site Cleanup Oversight
- **Natural Resources**
 - Environmental Planning
 - Environmental Review of Land Development
- **Water Resources**
 - Water Quality
 - Water Conservation
 - Hazardous Materials Management
- **Land Conservation**
 - Acquisition
 - Ecological Restoration and Land Management





Alachua County Environmental Protection Department

Pollution Prevention Division



- State funded tank compliance inspections
- Prevent groundwater contamination
- Over 500 tanks facilities
- Four county region (11 counties proposed)
- Funds 3 local jobs with \$ 250,000 budget

***1 gallon of
gasoline can
contaminate
6 million gallons
of drinking water***

Desired Outcome: Clean Water





Alachua County Environmental Protection Department

Pollution Prevention Division Petroleum Cleanup



- **State funded Clean-up of petroleum contaminated sites**
- **Ten county region managed by ACEPD**
- **Technical and financial oversight of private contractors**
- **Over 300 petroleum contaminated sites**
- **Average cost of clean-up ~ \$500,000 per site**
- **Funds 8 local jobs with \$ 1,012,000 budget**

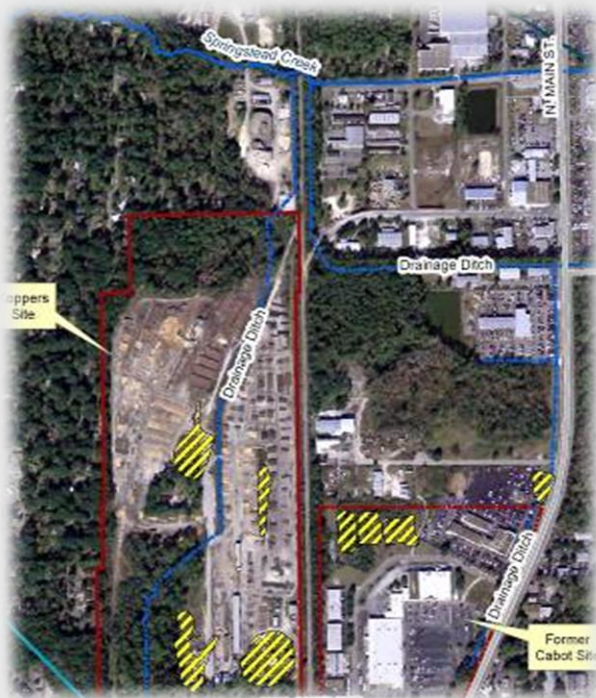
Desired Outcome: Clean Water





Alachua County Environmental Protection Department

Pollution Prevention



**Cabot Koppers
Superfund Site**



Offsite Soil Removal



**Depot Ave Stormwater
Park Site**

Contaminated Sites Review and Oversight

Desired Outcomes: Clean Water, Healthy Environment





Alachua County Environmental Protection Department

Pollution Prevention



**Hazardous Waste Collection
Center & Rural Collection
Centers**



Neighborhood Collections



Reuse/Recycle Center

Proper Disposal and Recycle of Hazardous Wastes -- Oils, Gasoline, Antifreeze, Batteries, Pesticides, Household Chemicals, Discarded Pharmaceuticals, Paints, Computers, Monitors, TVs, Electronics, Waste Vegetable Oil

Desired Outcome: Responsible Hazardous Waste Management





Alachua County Environmental Protection Department

Pollution Prevention



Waste Vegetable Oil to Biodiesel Fuel

- **FREE Services to Homeowners**
- **Contact EPD for Information**



Unwanted Pharmaceutical Disposal

Heating Oil Collection



Desired Outcome: Clean Water





Alachua County Environmental Protection Department

Protecting the **Natural Resources** of Alachua County

- Citizen response
- Pre-screening of building permits
- Development review, zoning, land use requests
- Compliance and Enforcement
- Environmental Planning

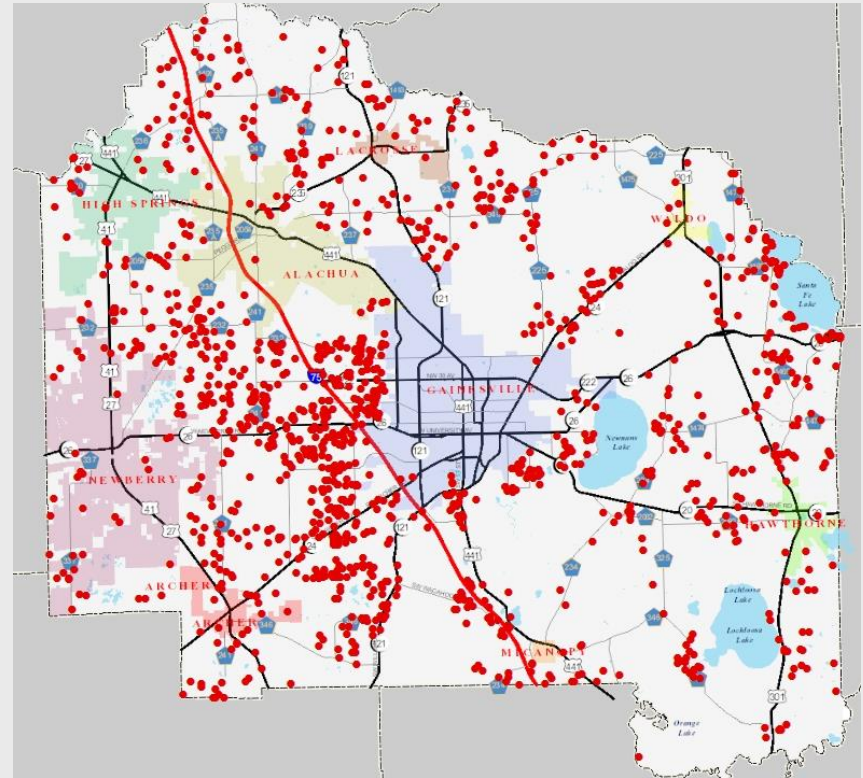




Alachua County Environmental Protection Department

Protecting the Natural Resources of Alachua County

- Citizen response
- **500** site visits per year
- **800** building permit reviews per year
- **200** development review projects per year
- Compliance and Enforcement
- Environmental Planning



Building permit sites in unincorporated Alachua County with natural resources issues (red dots).





Alachua County Environmental Protection Department

What are Alachua County's **natural resources**?





Alachua County Environmental Protection Department



We *all* benefit from our natural resources

ACCESS 2016 Spring Presentation

Environmental Stewardship





Alachua County Environmental Protection Department

Mapped Environmental Information

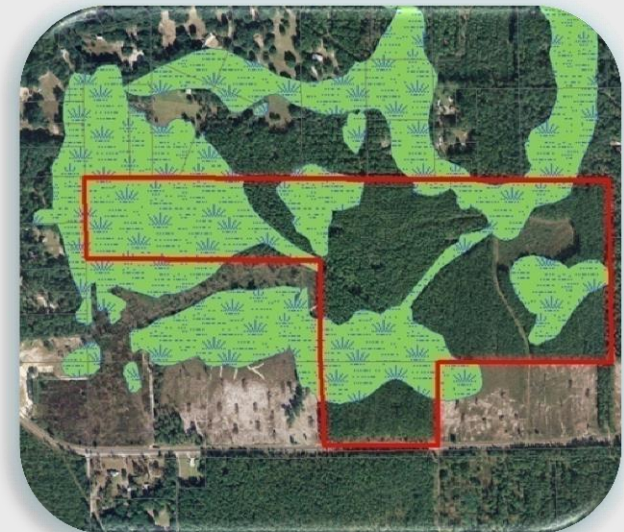
In Unincorporated Alachua County
Websites:

- Growth Management
 - <http://growth-management.alachuacounty.us/>
- Property Appraiser
 - <http://www.acpafl.org/>

Contact Alachua County EPD

- Natural Resources Section (352) 264-6800
<http://www.alachuacounty.us/epd/nr/>

BE AWARE: GIS MAPS MAY NOT INCLUDE ALL RESOURCES. Always have an environmental professional ground-truth your site before commencing any work to ensure that you will not impact natural resources.





Alachua County Environmental Protection Department

*Learning to be more **GREEN**...*

Green landscaping



Florida Friendly Landscaping using native plants which are well adapted to our climate and soils and require less irrigation

Green planning



Low(er) Impact Development (LID) features such as swales and porous pavement to allow groundwater recharge throughout a development

Green building



Clearing only enough land for the footprint of the house and adopting materials and building standards to make your house more energy efficient (skylights)





Alachua County Environmental Protection Department

Green thinking...

Headlines:

Bald eagles get a nest with a view

A developer has set aside some pricey land in Port St. Lucie so a family of bald eagles can have a multimillion-dollar view.



Local Examples:

Madera Subdivision

UF Southwest Rec Center

Campus USA Headquarters





Alachua County Environmental Protection Department

WATER RESOURCES



MONITORING

**COMPLIANCE ASSISTANCE
& ENFORCEMENT**

CLEANUP & RESTORATION

WATER CONSERVATION





Alachua County Environmental Protection Department



Monitoring local groundwater & surface waters





Alachua County Environmental Protection Department

Compliance Assistance & Enforcement



Facility Inspections

- 1000 regulated facilities
- 500 inspections per year
- Compliance assistance
- Complaint response





Alachua County Environmental Protection Department

Protecting environment and property values



Emergency Response to Spills



Monitor Waste Site Clean-up





Alachua County Environmental Protection Department

Water Conservation

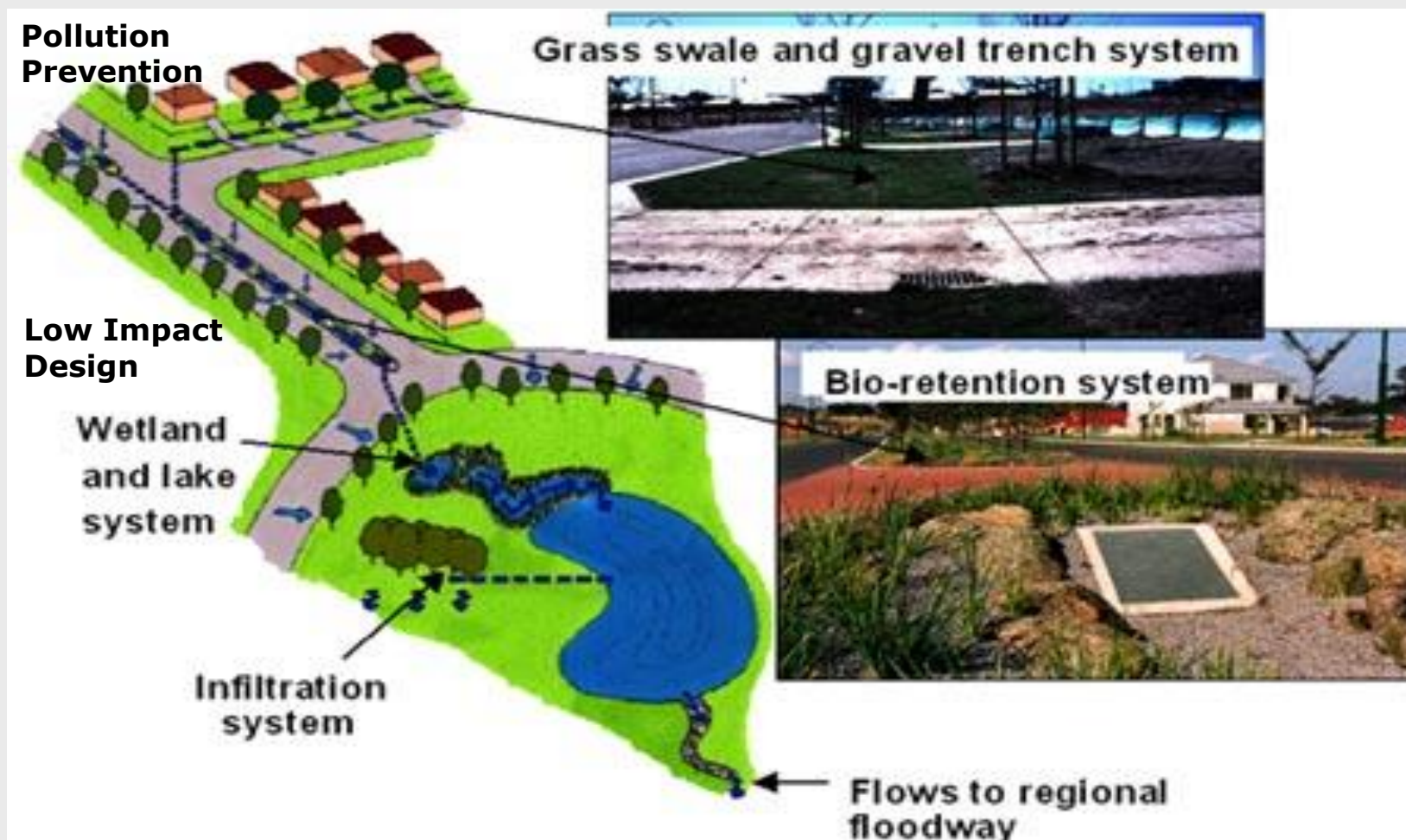
- Implementation of landscape irrigation codes
- Education and outreach
 - Classroom presentations
 - Community events
 - Presentations
 - Media campaigns
- Coordination of Santa Fe River Springs Protection Forums





Alachua County Environmental Protection Department

Water Quality – Stormwater Management





Alachua County Environmental Protection Department





Alachua County Environmental Protection Department

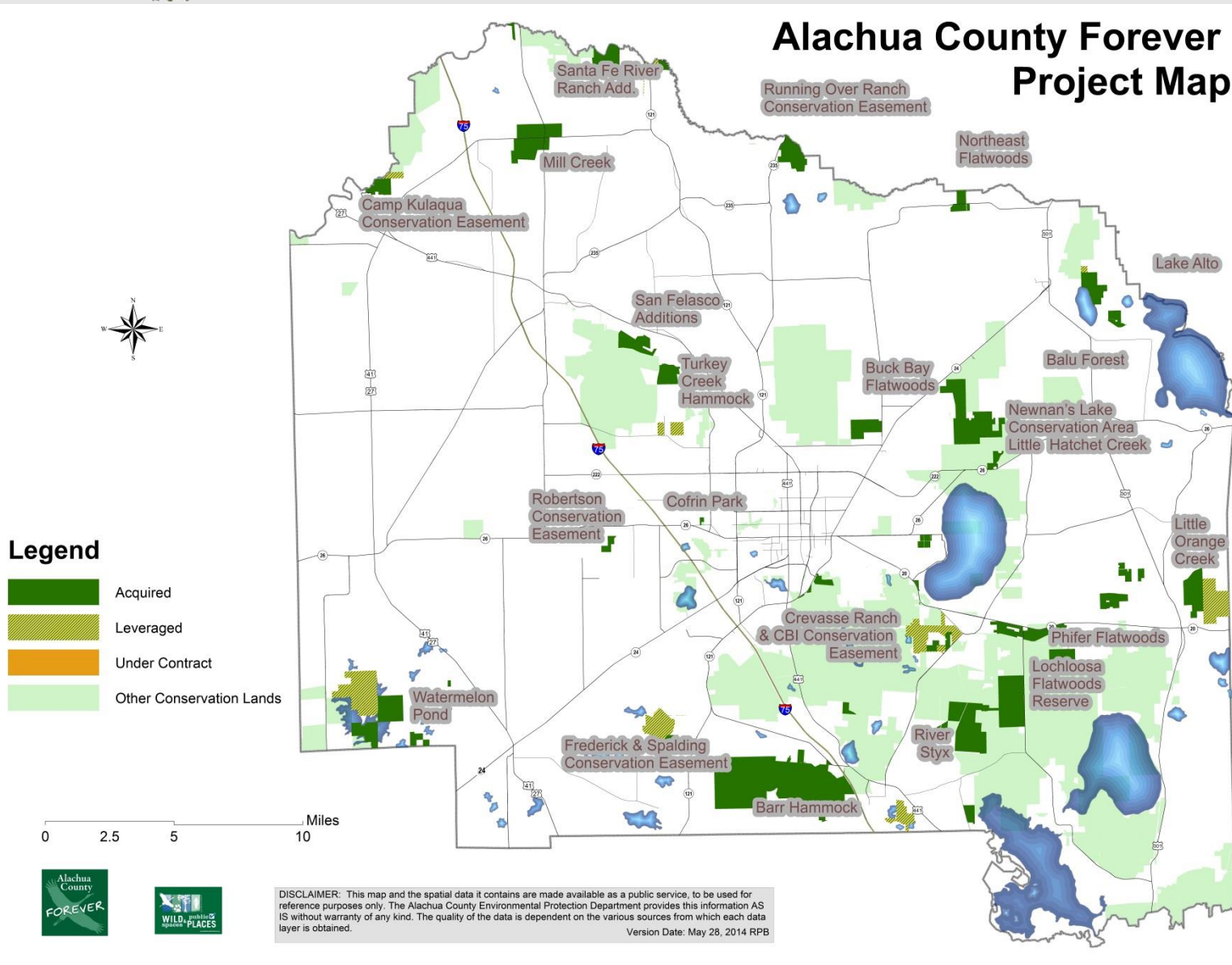


***“What is the extinction of the condor to a child who has never known a wren?”
- R.M. Pyle.***





Alachua County Environmental Protection Department



Conserving land at the local level

- 244,244 acres nominated
- 55,802 acres listed
- 24,015 acres protected
- 19,295 acres by ACF
- Turned \$38M into \$111M
- 4.43% "overhead"
- 99% (ac) have partnerships
- 45% (ac) managed by partners
- Tax Base Impact: \$4.6M (0.04% of 2014 Tax Base)
- "Lost" Tax Receipts: \$102,849
- Avg. daily growth in Tax Base: \$1.2M since 2001
- To recoup "loss": 4 days





Alachua County Environmental Protection Department Stewardship





Alachua County Environmental Protection Department

Proximity Effect

Enhanced Value from Open Space Proximity

By Land Use and by Population Density of Parcel Neighborhood

30,000

All told, some 12,700 parcels in the county are close enough to open space to benefit from this increased value. The total impact on their value is just under \$150 million, and the overall impact on property tax revenues is approximately \$3.5 million per year.

ed value

15,000

10,000

In 2013, this study was repeated by the University of Florida. Adjacent properties increased in value \$7,110 due the proximity effect. The effect diminished by \$2 for every meter.

High
Density

Near
Medium Density

Touching

Low
Density

Vacant
Land

Condos

Single Family Residential





Alachua County Environmental Protection Department



How to get involved



ACCESS 2016 Spring Presentation

Environmental Stewardship





Alachua County Environmental Protection Department

Thank you!

